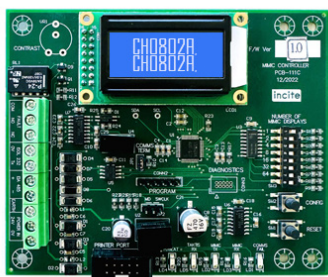


TS-RD-CONTROLLER



Remote Display Controller

Product Overview

Main Control Board

This board is located inside the Taktis Fire Control Panel and is attached to the status printer port. It listens to this port and analyses each message and determines whether it is a fire message and should be transmitted to the Remote Displays.

Configuration

The control board offers the flexibility to be configured for driving up to 31 remote display units, with the option for a Nurse Call interface or to be set exclusively for Nurse Call interface mode.

This configuration can be achieved by adjusting the position of specific switches:

- 1. Remote Display Configuration:** To determine the number of remote display units connected, utilize switches 1 through 5 to select any number between 1 and 31.
- 2. Nurse Call Interface Only:** Switch 8 serves a distinct purpose—it is dedicated to configuring the control board for Nurse Call interface mode only. Setting switch 8 to the 'on' position ensures that the control board exclusively operates as a Nurse Call interface and disables monitoring and control for the Remote Displays.

Specifications:

Parameter	Description
Display	2 line x 16 character display
Size	115mm x 95mm
Operation Voltage Range	18 to 33V DC
Current consumption	Quiescent 60mA @ 24v Alarm 60mA @ 24v
Communication	RS485 @ 19200kbs - max 1.2km
Max number of Remote Displays	31



TS-RD-ANNUNCIATOR

Remote Display

The main control board receives status messages from a Taktis panel, and distributes the alarm messages to the remote displays.

**refer to TS-RD-ANNUNCIATOR Data Sheet*